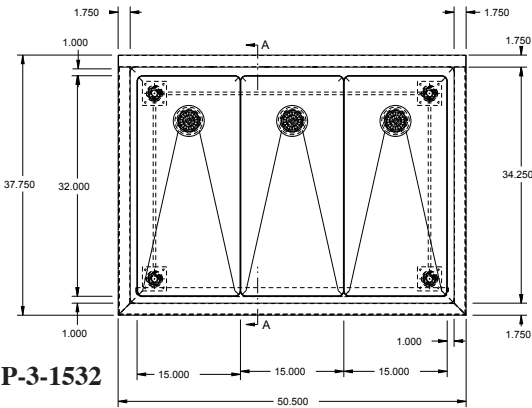
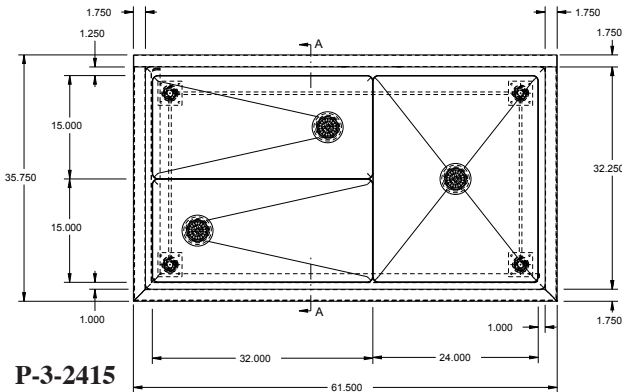


P-2-1532



P-3-1532



P-3-2415

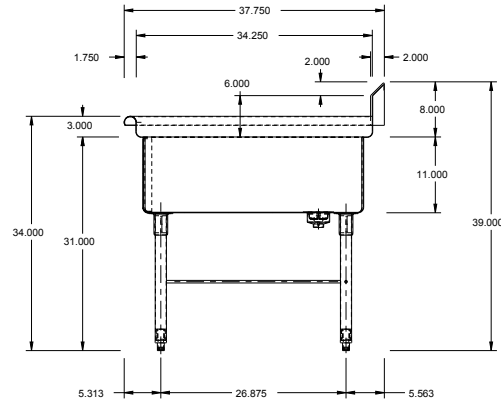
PROJECT# \_\_\_\_\_  
 ITEM# \_\_\_\_\_  
 MODEL# \_\_\_\_\_

**Features:**

- All sinks are N.S.F. listed
- All sinks ship with crumb cup drains
- Full line of faucets and drains available
- 14-gauge 304 fabrication available
- 14" and 15" bowl depth available

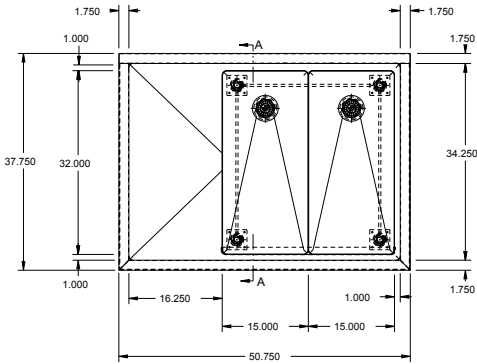
**Mechanical Specifications:**

- 16-gauge 304 stainless steel fabrication
- Crumb cup drain 1-1/2" IPS
- Fully welded, seamless, polished
- 1-5/8" stainless steel legs with adjustable bullet feet
- Integral 8" s/s backsplash
- 8" on-center faucet holes
- 3/8" crossrails front to back

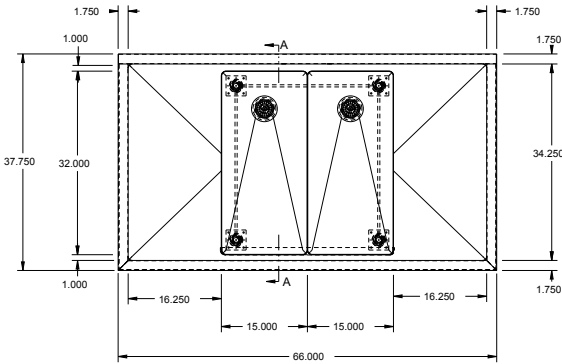


Model #	# of Bowls	Bowl Size (inches)	Drainboard Length (inches)	O.A. Dims (inches)	Weight	Quantity
P-2-1532	2	15 L x 32 W x 11 D	None	35-1/2 L x 37-3/4 W x 39	73 lbs	
P-3-1532	3	15 L x 32 W x 11 D	None	50-1/2 L x 37-3/4 W x 39	103 lbs	
P-3-2415	3	2 @ 15 L x 32 W x 11 D 1 @ 24 L x 30 W x 11 D	None	61-1/2 L x 35-3/4 W x 39	142 lbs	

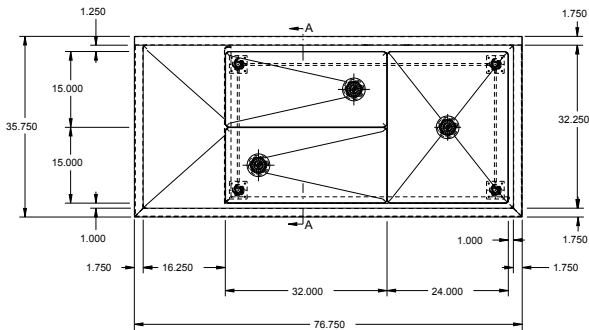




**P-2-1532-18L**



**P-2-1532-18D**



**P-3-2415-18L**

PROJECT# \_\_\_\_\_

ITEM# \_\_\_\_\_

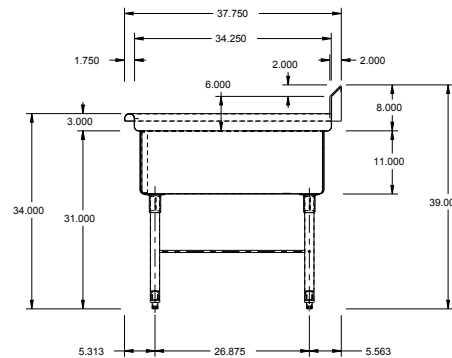
MODEL# \_\_\_\_\_

**Features:**

- All sinks are N.S.F. listed
- All sinks ship with crumb cup drains
- Full line of faucets and drains available
- 14-gauge 304 fabrication available
- 14" and 15" bowl depth available

**Mechanical Specifications:**

- 16-gauge 304 stainless steel fabrication
- Crumb cup drain 1-1/2" IPS
- Fully welded, seamless, polished
- 1-5/8" stainless steel legs with adjustable bullet feet
- Integral 8" s/s backsplash
- 8" on-center faucet holes
- 3/8" crossrails front to back



Model #	# of Bowls	Bowl Size (inches)	Drainboard Length (inches)	O.A. Dims (inches)	Weight	Quantity
<b>One Drainboard:</b>						
P-2-1532-18 L or R	2	15 L x 32 W x 11 D	18	50-3/4 L x 37-3/4 W x 39	123 lbs	
P-3-2415-18 L or R	3	2 @ 15 L x 32 W x 11 D 1 @ 24 L x 30 W x 11 D	18	76-3/4 L x 35-3/4 W x 39	190 lbs	
P-3-1532-18 L or R	3	15 L x 32 W x 11 D	18	65-3/4 L x 37-3/4 W x 39	165 lbs	
<b>Two Drainboards:</b>						
P-2-1532-18 D	2	15 L x 32 W x 11 D	18	66 L x 37-3/4 W x 39	165 lbs	
P-3-2415-18 D	3	2 @ 15 L x 32 W x 11 D 1 @ 24 L x 30 W x 11 D	18	92 L x 35-3/4 W x 39	195 lbs	
P-3-1532-18 D	3	15 L x 32 W x 11 D	18	81 L x 37-3/4 W x 39	193 lbs	

