

We're bringing it
all together for you...

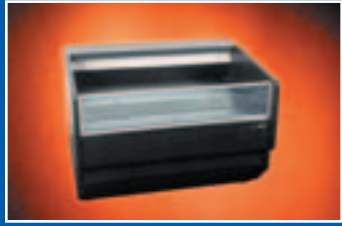




...with reduced lead times...

Through the strategic relocation and consolidation of our woodworking, metal fabricating, engineering and management operations all under one roof, along with the addition of the newest fabricating machinery, Amtekco is able to streamline the production process and significantly reduce standard industry lead times.





...optimized quality control...

This all-in-one food service equipment facility offers Amtekco the opportunity to optimize resources and maximize quality control throughout the entire manufacturing process.





...enhanced customer service...

Bringing the entire design, sales, service, fabricating, manufacturing and shipping functions under a single roof allows all Amtecko departments to communicate seamlessly and to respond to customer needs in the most efficient and timely manner possible.





...and expanded design services...

The new facility features a state-of-the-art wing dedicated to engineering and design. The wing houses 35 design, mechanical and electrical engineers with unsurpassed experience in the food service and wholesale plumbing industries.



...all under one roof.

Amtekco Industries, in our quest to continually provide the food service industry with the most innovative, functional, durable and high quality products, is relocating and consolidating the woodworking, metal fabricating, engineering, customer service and management operations under one highly organized and efficient 200,000 square foot facility located in Columbus, Ohio.

The synergies of all of the Amtekco teams working together under one roof will provide the food service and plumbing wholesale industries with the optimum design and manufacturing solution.

You are invited to see this superb facility for yourself. Contact us to schedule your personal tour.



MANUFACTURERS OF QUALITY PRODUCTS
FOR THE FOOD MARKETING INDUSTRY

1.800.336.4677

www.amtekco.com