

Euro Sink Combines Flair With Functionality.



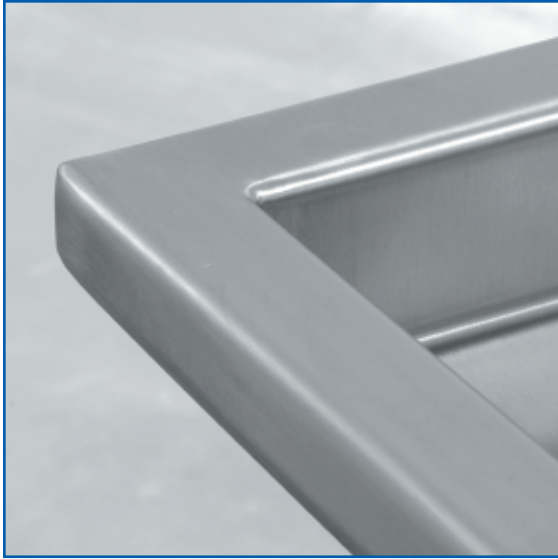
Amtekco

I N D U S T R I E S I N C .

MANUFACTURERS OF QUALITY PRODUCTS
FOR THE FOOD MARKETING INDUSTRY

1205 Refugee Road • Columbus, Ohio 43207
800-336-4677 or 614-228-6590 • Fax: 614-737-8017
www.amtekco.com

Euro Sink Combines Flair With Functionality.



Amtekco's new Euro Sink incorporates a stylish and attractive square edge finish that nicely matches the worktables in your prep areas.



The Euro Sink's die formed drain system quickly and completely empties the sink bowl.

Benefits:

- Stylish, modern look
- Longer lasting, constructed of high quality stainless steel
- Mounting brackets and turned-up back splash provides for easy installation in the field
- Fully fabricated
- Channel edge
- Amtekco's custom capabilities allow for easy replacement of current sink
- Increased opportunity to supply full package of sinks for commercial and industrial projects

Standard Specifications:

- 16 gauge 300 stainless steel fabrication
- 3 1/2" drain opening w/crumb cup drain and basket strainer 1 1/2" IPS
- Fully welded, seamless and polished to a #3 commercial finish
- Radiused, horizontal and vertical corners (NSF)
- Die formed drain system
- Turned-up back splash for flush wall mounting
- NSF listed and labeled

Options:

- 14 gauge stainless steel fabrication
- Different bowl sizes and depths
- Additional faucet drillings
- Sound deadening to underside of sink bowl
- Single or double drain boards
- ADA options
- Heavy-duty faucets
- Lever action wastes

Contact your Amtekco sales representative: 1-800-336-4677



Equipment That Means Business